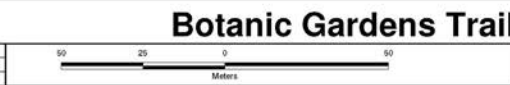




Document Path: G:\Assets & Planning\Bases.mxd

DISCLAIMER  
While all care has been taken in the preparation of this information, Earthwatch Institute does not warrant the accuracy or completeness of the information. Earthwatch Institute disclaims any liability for any loss or damage arising from the use of this information.

SCALE:	1:1500
DRAWN:	NDuncan
DATE:	31/08/2015



### Botanic Gardens Trail Walk

AlburyCity

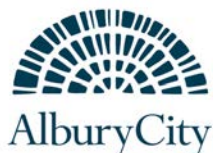


Fancy being a ClimateWatcher in the Albury Botanic Gardens? Follow the numbers on the map and you may encounter the following species. Use our field guides to confirm your observations and record them using the ClimateWatch smartphone app or the paper recording sheets. If you use the recording sheets, don't forget to enter your sightings at <http://www.climatewatch.org.au> when you get home.

You can walk the trail as long as you like. Make sure to wear comfortable shoes, sunscreen and a hat, and bring water. Happy ClimateWatching!

GROUP	SPECIES: Common name ( <i>Scientific name</i> )
Birds	Eastern Spinebill ( <i>Acanthorhynchus tenuirostris</i> )
	Grey Fantail ( <i>Rhipidura albiscapa</i> )
	Willie Wagtail ( <i>Rhipidura leucophrys</i> )
Frogs	Southern Bullfrog, Eastern Banjo or Eastern Pobblebonk Frog ( <i>Limnodynastes dumerilii</i> )
Insects	Orchard Swallowtail Butterfly ( <i>Papilio aegeus</i> )
Spiders	Christmas or Jewel Spider ( <i>Austracantha minax</i> )
Plants	English Oak ( <i>Quercus robur</i> )
	Firewheel Tree ( <i>Stenocarpus sinuatus</i> )
	Illawarra Flame Tree ( <i>Brachychiton acerifolius</i> )
	Jacaranda ( <i>Jacaranda mimosifolia</i> )

Developed in partnership with



Supported through funding from



Data collected contributes to



ATLAS OF LIVING AUSTRALIA  
sharing biodiversity knowledge

### Eastern Spinebill

*Acanthorhynchus tenuirostris*



### Grey Fantail

*Rhipidura albiscapa*



### Willie Wagtail

*Rhipidura leucophrys*



### Eastern Pobblebonk Frog

*Limnodynastes dumerilii*



Time			
Latitude/Longitude			
Count			
Behaviour			
Notes			



			Time
			Latitude/Longitude
			Count
			Behaviour
			Notes

### English Oak

*Quercus robur*



### Firewheel Tree

*Stenocarpus sinuatus*



### Illawarra Flame Tree

*Brachychiton acerifolius*



### Jacaranda

*Jacaranda mimosifolia*



### Christmas or Jewel Spider

*Austracantha minax*



Time			
Latitude/Longitude			
Count			
Phenophase			
Notes			




			Time
			Latitude/Longitude
			Count
			Behaviour
			Notes

### Phenophase Abbreviations

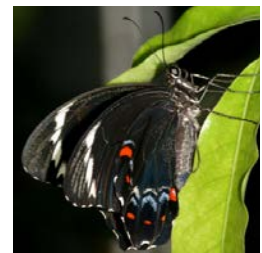
1F	First fully open flower	LC	Leaves changing colour
FF	Full flowering	1LD	First leaf to fall this year
EF	End of flowering	LD	≥50% leaves fallen
NF	Not flowering	NL	No leaves
1LO	First fully open leaf	OSP	Open seed pods (Jacaranda only)
LO	Leaves open	1LC	First leaf to change colour

### Behaviour Abbreviations

C	Calling	Birds	F	Feeding	
CM	Courting/mating		BC	Bird on chicks	
Butterflies	LE		Laying eggs	BE	Bird on eggs
	Ch		Chrysalis	BN	Bird on nest
Frogs	T		Tadpoles	FY	Feeding young
Spiders	M		Males (include number)	NP	Nest present
	ES		Egg sacs in web		

### Orchard Swallowtail Butterfly

*Papilio aegaeus*



			Time
			Latitude/Longitude
			Count
			Behaviour
			Notes