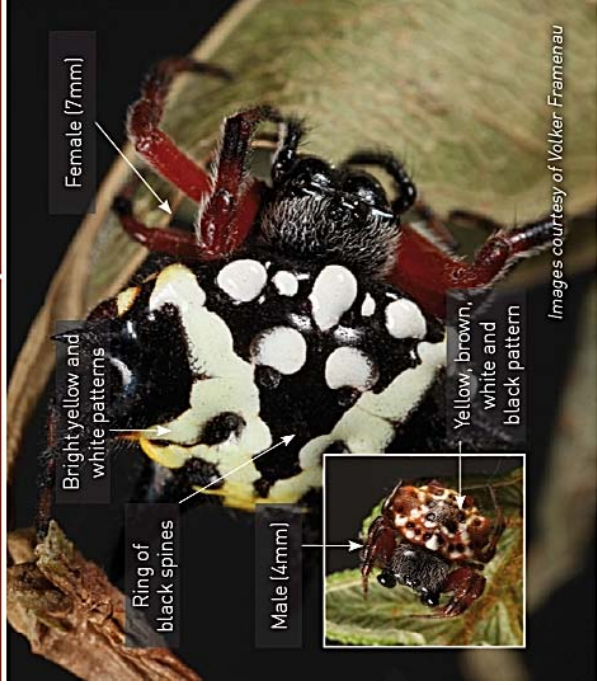


species field guide

Christmas or Jewel Spider *Austracantha minax*

When to look:
November to February



ClimateWatch
an initiative of Earthwatch Institute

EARTHWATCH
INSTITUTE

climatewatch.org.au

earthwatch.org.au

species field guide

Eastern Spinebill *Acanthorhynchus tenuirostris*

When to look:
August to January (breeding),
March to October (migratory
birds in lowland areas)



ClimateWatch
an initiative of Earthwatch Institute

EARTHWATCH
INSTITUTE

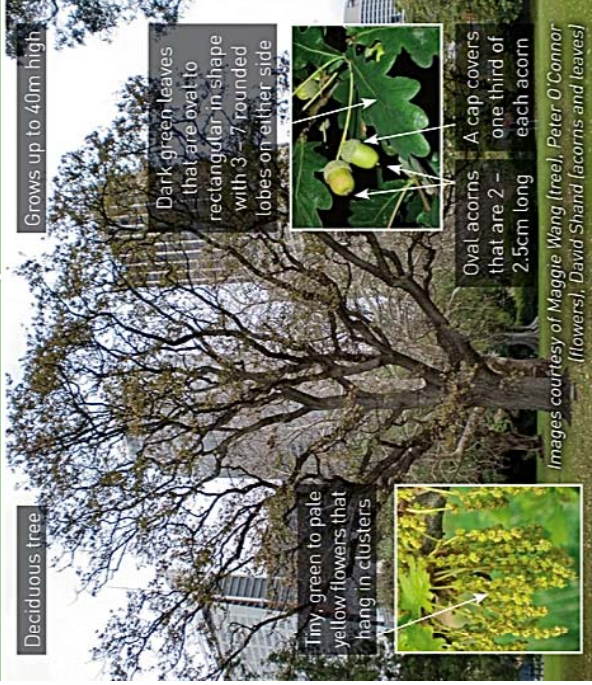
climatewatch.org.au

earthwatch.org.au

species field guide

English or Common Oak *Quercus robur*

When to look:
Throughout the year



ClimateWatch
an initiative of Earthwatch Institute

EARTHWATCH
INSTITUTE

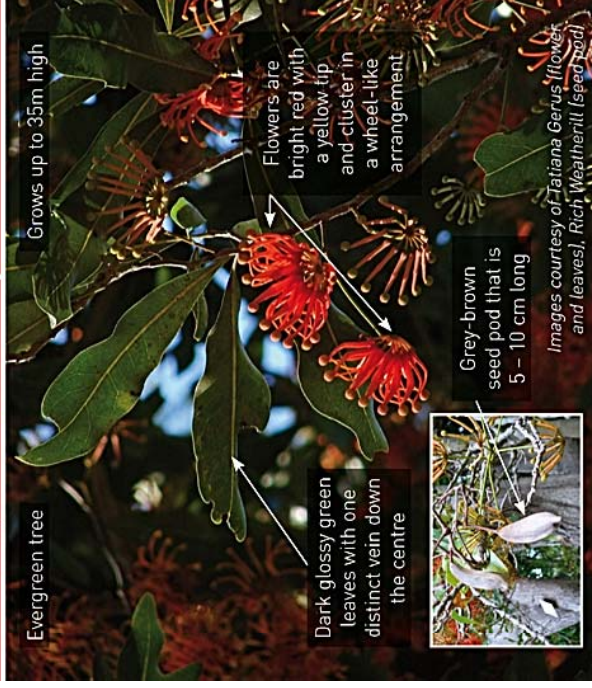
climatewatch.org.au

earthwatch.org.au

species field guide

Firewheel Tree *Stenocarpus sinuatus*

When to look:
December to June



ClimateWatch
an initiative of Earthwatch Institute

EARTHWATCH
INSTITUTE

climatewatch.org.au

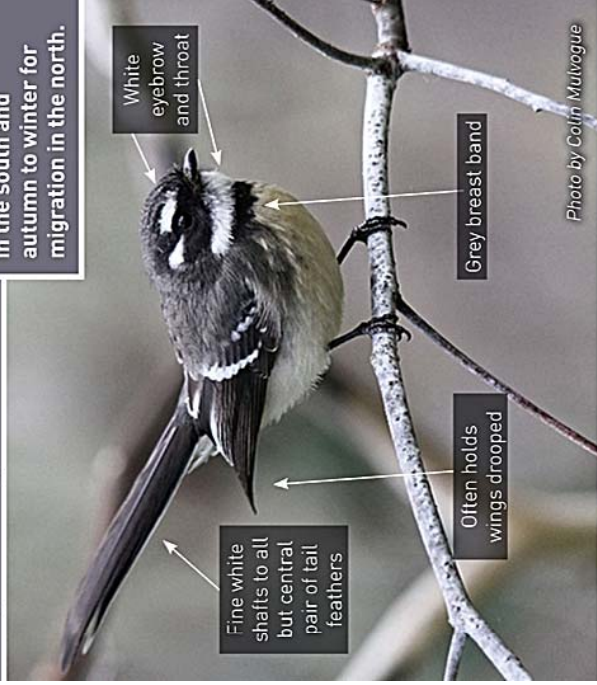
earthwatch.org.au

species field guide

Grey Fantail

Rhipidura fuliginosa

When to look: July to January for nesting in the south and autumn to winter for migration in the north.



Fine white shafts to all but central pair of tail feathers

White eyebrow and throat

Often holds wings drooped

Grey breast band

Photo by Colin Mulvogue



climatewatch.org.au

earthwatch.org.au

species field guide

Illawarra Flame Tree *Brachychiton acerifolius*

When to look: Throughout the year



Deciduous tree



Smooth, oval-shaped leaves with lobes

Dark-brown, leathery seed pod that is about 10cm long



Bright coral-red, waxy and bell-shaped flowers

Grows up to 35m high

NOTE: the hairs within the seed pod can irritate the skin and are easily inhaled, so it is not advisable to handle any open seed pods.

Images courtesy of Doug Beckers (tree), Dan Anderson (leaf, flower, seed pods)



climatewatch.org.au

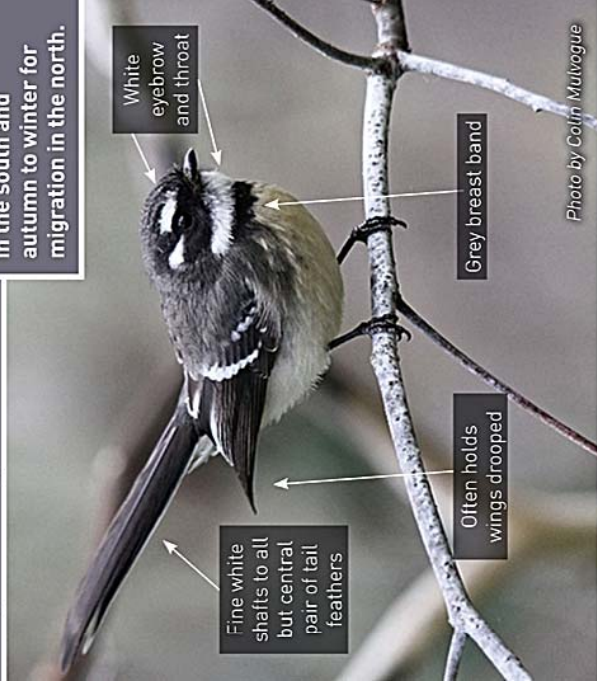
earthwatch.org.au

species field guide

Grey Fantail

Rhipidura fuliginosa

When to look: July to January for nesting in the south and autumn to winter for migration in the north.



Fine white shafts to all but central pair of tail feathers

White eyebrow and throat

Often holds wings drooped

Grey breast band

Photo by Colin Mulvogue



climatewatch.org.au

earthwatch.org.au

species field guide

Jacaranda

Jacaranda mimosifolia

When to look: Throughout the year



Blue-purple and trumpet-shaped flowers

Bright green, feathery and fern-like leaves



Red-brown seed pod that is round and flat, and 3 – 6 cm in diameter

Images courtesy of John Mewett (tree), Rich Weatherill (flowers, seed and leaves)

Deciduous tree

Grows up to 15m high and wide



climatewatch.org.au

earthwatch.org.au

species field guide

Orchard Swallowtail Butterfly *Papilio aegeus*

When to look: October to May



Female: Arc of creamy-white spots near the tip of its forewing

Mainly brown to black
Whitish-grey on the outer half of its forewing

Creamy-white patch and series of blue and red crescent-shaped markings on its hindwing

Male: Mainly black

Creamy-white patch and series of blue and red crescent-shaped markings on its hindwing
single red spot on its hindwing

Images courtesy of Geoff Walker



climatewatch.org.au

earthwatch.org.au



climatewatch.org.au

earthwatch.org.au



climatewatch.org.au

earthwatch.org.au

species field guide

**Southern Bullfrog,
Eastern Banjo or
Eastern Pobblebonk Frog**
Limnodynastes dumerilii

When to look:
August to April



Grey, to olive-green,
dark brown or black back,
with dark marbling or flecks

Warty and
rough back

Prominent
gland on its
outer back leg

Its sides commonly have
a purple or bronze sheen,
mottled with black

Pale yellow stripe
running from under
its eye to its arm

Tip: listen for its
call, a single "bonk"
or "plonk" that is
usually repeated
every few seconds

Image courtesy of Stephen Mahony

ClimateWatch
an initiative of Earthwatch Institute

EARTHWATCH
INSTITUTE

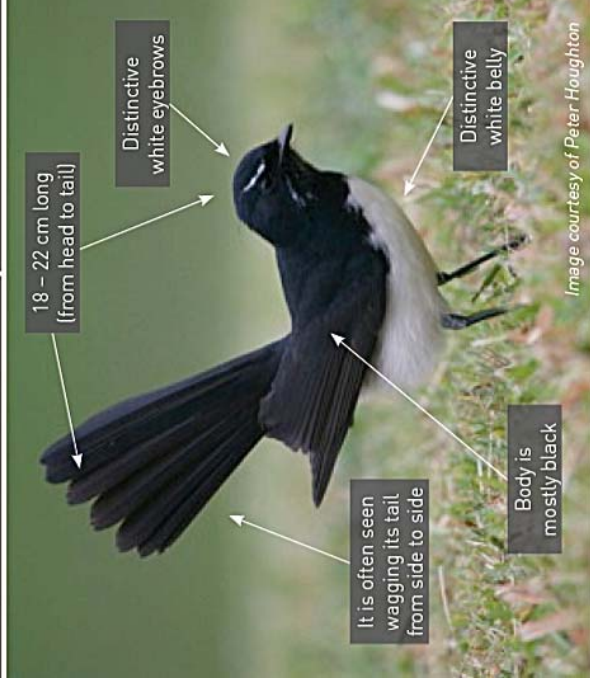
climatewatch.org.au

earthwatch.org.au

species field guide

Willie Wagtail
Rhipidura leucophrys

When to look:
August to February



18 – 22 cm long
(from head to tail)

Distinctive
white eyebrows

It is often seen
wagging its tail
from side to side

Body is
mostly black

Distinctive
white belly

Image courtesy of Peter Houghton

ClimateWatch
an initiative of Earthwatch Institute

EARTHWATCH
INSTITUTE

climatewatch.org.au

earthwatch.org.au