

# PLANT field guide

## Coast Wirilda *Acacia uncifolia*

### Similar species:

Closely resembles *Acacia provincialis*, *Acacia cyclops* and *Acacia retinodes*, and previously treated as a variety of the latter.

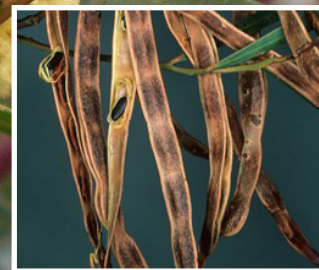
*A. retinodes* is now regarded to be endemic to the Mount Lofty Ranges in South Australia.

*A. uncifolia* may be distinguished from *A. provincialis* by its suckering habit, smaller phyllodes (leaves) with a distinctly uncinata (hooked) tip, and smaller flower heads.

Bushy shrub  
5-10m height.  
Reddish angular  
branches.

Leaves flat, linear  
with hooked tip

Flowers pale  
yellow with  
spherical heads



Pods are thin  
and straight

Delivered in  
partnership with



Images: John Tann Flickr CC BY 2.0 & Peter Lang

**When to look:** Usually flowers Oct–Nov