

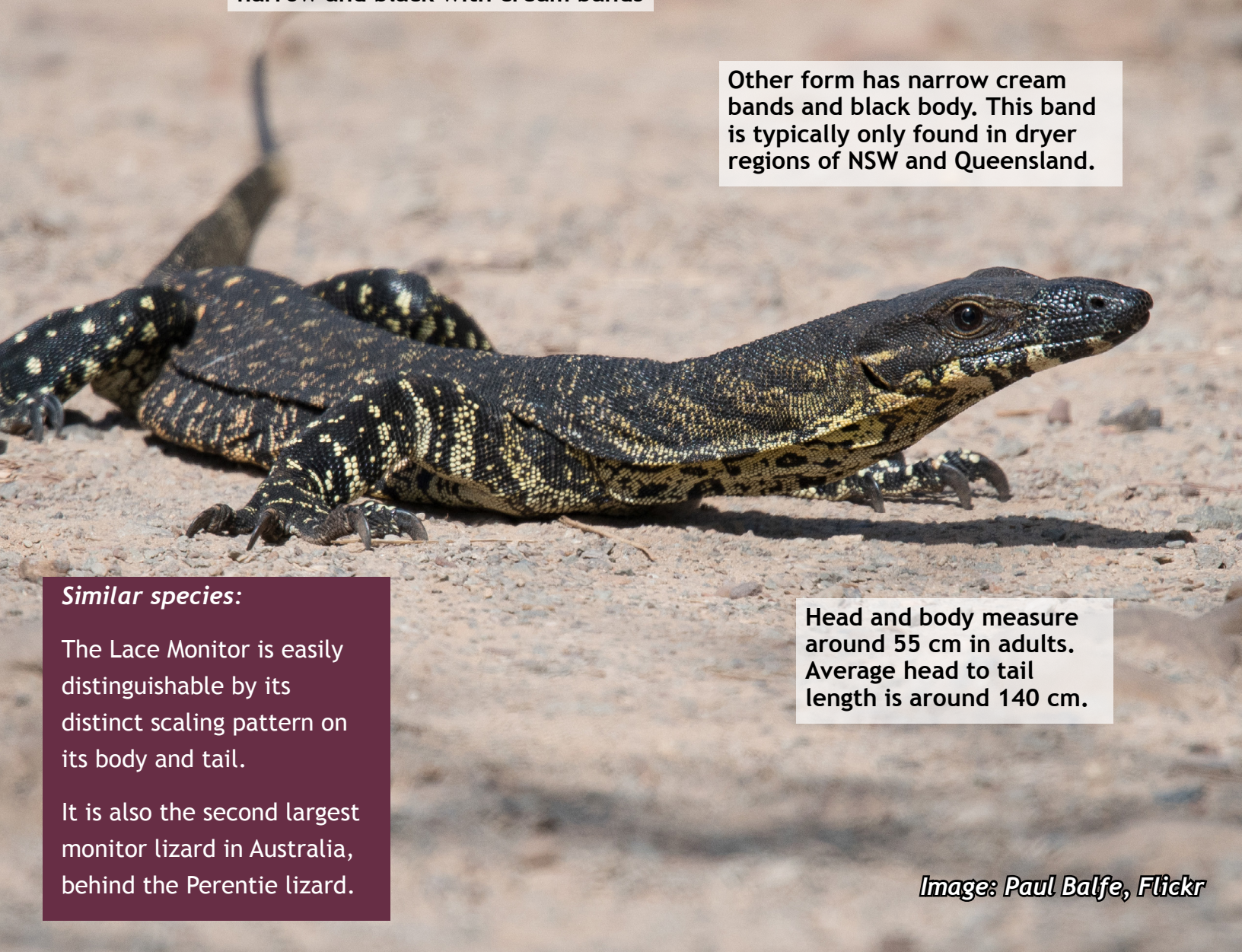
Lace Monitor *Varanus varius*

When to look:

*Most active from
September - May*

Main form is dark grey or blueish-black with scattered, cream-coloured spots. Snout and neck has bands of black and yellow. Tail is narrow and black with cream bands

Other form has narrow cream bands and black body. This band is typically only found in dryer regions of NSW and Queensland.



Similar species:

The Lace Monitor is easily distinguishable by its distinct scaling pattern on its body and tail.

It is also the second largest monitor lizard in Australia, behind the Perentie lizard.

Head and body measure around 55 cm in adults. Average head to tail length is around 140 cm.

Image: Paul Balfe, Flickr