

Ironbark

Eucalyptus tricarpa

When to look:

Throughout year; usually
flowers winter



Adult leaves shaped like a lance-head, 9.5 - 22 cm long, 1-2 cm wide, green, bluish or whitish waxy coating.

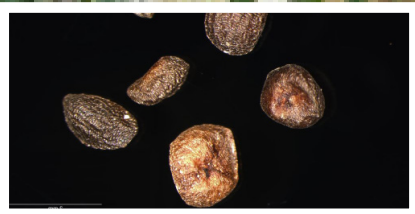
Tree up to 35 m; bark is rough over whole trunk and branches, thick, hard, grooved, grey-black (ironbark).

Flowers white rarely pink. 3-budded umbels. Keep an eye out for the flower caps that cover developing flowers and may fall on the ground at the end of flowering!

Similar species:

Keep an eye out for *E. tricarpa*'s 3 flower buds and deciduous operculum/flower caps.

Fruits are truncate (end abruptly as it cut off across the tip), spherical and 1.4 cm long, 1.4 cm diam.; seed brown, irregularly egg-shaped and slightly flattened.



Images courtesy of VIC Flora RBGV; Gwen and Rodger Elliot (flowers), Robert Hare (seeds)