

Desert Ash Tree

Fraxinus angustifolia

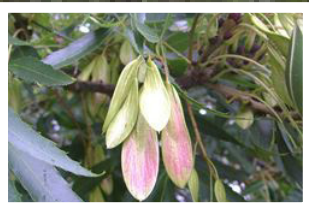
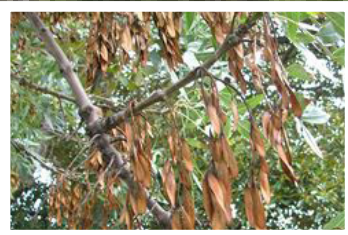
When to look:

Throughout year; leaves yellow in autumn, flowers spring

Leaves 14-20cm long, usually 5-7 (or occasionally 13) leaflets. Serrated edges with pointed leaf tips. Bright and shiny green on upper side and dark and pale on underside.



Fruits are samara (type of dry fruit that are winged to help carry the seed away via wind). Mature fruit pictured.



Red to purple inconspicuous flowers with no sepals or petals.

Large green tree around 20m high with yellow leaves in autumn.

Similar species:

All Ash trees are weeds that should be removed from natural areas. We welcome sightings of all possible Ash Trees - please add additional comments if unsure. The sub-species *oxycarpa* has grand purplish foliage in autumn whereas the Desert Ash has Yellow leaves in autumn.

Images courtesy of VicFlora © Messina Andre and Sheldon Navie.