

European Wasp *Vespula germanica*

When to look:
Spring to autumn

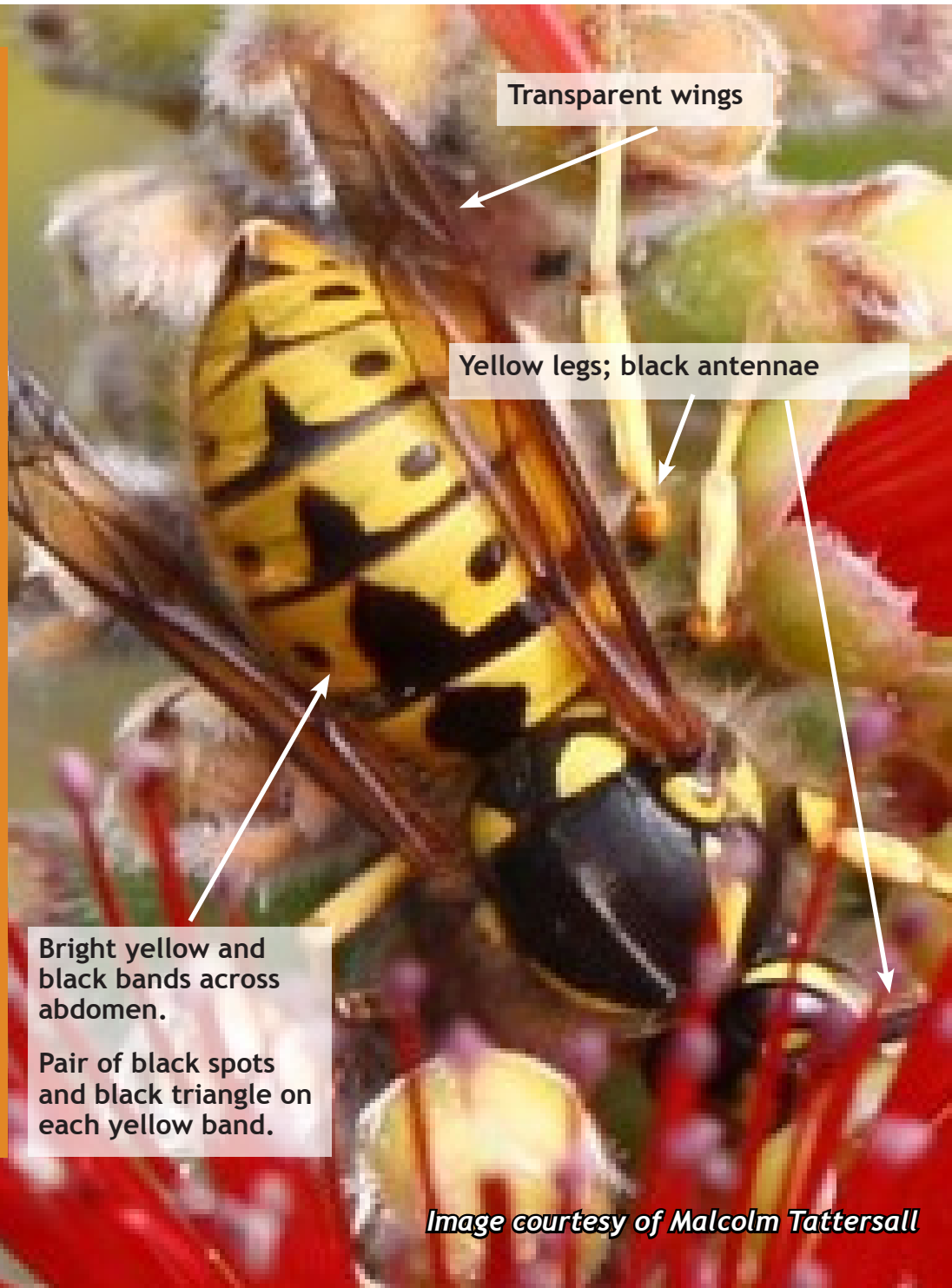
Similar species:

English Wasp: black marking on each yellow band on its abdomen tapers to a point, while it is a triangle shape on the European wasp. It is also restricted to the eastern parts of Melbourne and Gippsland region.

Paper wasp: has a longer, thinner body, orange-brown antennae, back legs that hang down during flight, and is often seen hovering. Its nest is smaller, usually above ground and looks like honeycomb cells without an outer covering.

Other wasps: most don't have the vivid yellow and black markings.

Bee: has black legs, dull yellow bands on its abdomen with no black dots.



Transparent wings

Yellow legs; black antennae

Bright yellow and black bands across abdomen.

Pair of black spots and black triangle on each yellow band.

Image courtesy of Malcolm Tattersall